



E & A CONSULTING GROUP, INC.

Engineering Answers

10909 Mill Valley Rd, Ste 100 | Omaha, NE 68154
402.895.4700
eacg.com

Dear Homeowner,

The SID has contracted concrete work to be done on the streets in your SID. A contractor will be on site to do work which includes removing the existing concrete that is damaged and replacing it with new pavement.

Throughout the course of this project, there could be some minimal damage done to yards and or sprinkler systems. The contractor that is on site will be responsible for replacing any damaged sprinkler lines and/or heads. They will also be responsible for any yard damage. Once the new seed and mat and/or sod is installed, it will be the responsibility of the homeowner at each lot to water the new seed and mat and/or sod until it has re-established itself.

Before starting the work on site, each contractor must put in a call and have all the utilities in the area located. You might notice some areas in your yard that have been flagged and/or spray painted. This does not indicate the area in which they will be working. It is just to give them an idea of what kind of utilities are in the area that could possibly be hit while the contractor is on site working.

All work that is completed in public Right-of-Way and follow City of Omaha and Sarpy County specifications.

The work in your SID should not take longer than 30 days to complete. Please let me know if you have any questions or concerns on this at all.

Thank You,

A handwritten signature in black ink, appearing to read 'Nelson Flores', is written over a white background.

Nelson Flores

Construction Admin Tech

Engineering Answers...by transforming concepts into reality

E & A Consulting Group, Inc.

10909 Mill Valley Road, Suite 100 • Omaha, NE 68154

402.895.4700 (o) • 402.506.5023 (m)

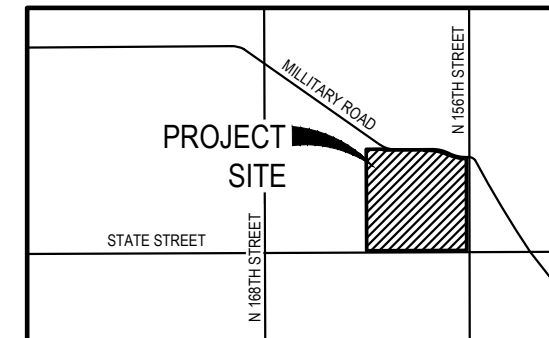
nflores@eacg.com



HANOVER FALLS

2024 STREET RECONSTRUCTION

SID NO. 535
DOUGLAS COUNTY, NEBRASKA



VICINITY MAP



APPROXIMATE BID QUANTITIES

ITEM	DESCRIPTION	QUANTITY	UNIT
1	CONCRETE PAVEMENT REPAIR, LARGE AREA	478	SY
2	CONCRETE PAVEMENT REPAIR, SMALL AREA	162	SY
3	FULL DEPTH SAW CUT EXISTING PAVEMENT	695	LF
4	ADJUST MANHOLE TO GRADE	2	EA
5	REMOVE AND REPLACE FAULTY SUBGRADE	25	TN
6	PERFORM DIAMOND GRINDING (1 location)	32	SY



INDEX OF SHEETS

SHEET NO.	DESCRIPTION
1	COVER
2	PLAN



NOTE TO BIDDERS

- All project procedures, materials, bonds and reserves shall conform to the City of Omaha's Standard Specifications for Public Works Construction, 2024 Edition ("Standard Specifications"). It is the responsibility of the CONTRACTOR to be familiar with the contents of the Standard Specifications. The Standard Specifications can be found at: <https://publicworks.cityofomaha.org/contractors-consultants2/contractors/standard-plates-curb-ramps-and-specifications>
- References to "Standard Plates" refers to the City of Omaha's 2024 Standard Plate list. These Standard Plates can be found at: <https://publicworks.cityofomaha.org/2024-standard-plate>

The CONTRACTOR is referred to the following Standard Plates for use on this project:

PLATE NO.	DESCRIPTION	REVISION DATE
1002-02-1, 3, 4	Pavement Repair	02/13/2024

APPLICANT

SID # 535
Chad Herbolsheimer, Chairman
11440 West Center Rd, Ste. C
Omaha, NE 68144
P: 402.334.0700
F: 402.334.0815
jhfr@fjblaw.com

DESIGNER

E & A Consulting Group, Inc
Teresa Wooten, P.E.
10909 Mill Valley Road, Suite 100
Omaha, NE 68154
P: 402.895.4700
F: 402.895.3599
twooten@eacg.com

INSPECTOR

E & A Consulting Group, Inc
Randall L. Pierce, P.E.
10909 Mill Valley Road, Suite 100
Omaha, NE 68154
P: 402.895.4700
F: 402.895.3599
rpierce@eacg.com

CONTRACTOR

E & A CONSULTING GROUP, INC.
Engineering • Planning • Environmental & Field Services
10909 Mill Valley Road, Suite 100 • Omaha, NE 68154
Phone: 402.895.4700 • Fax: 402.895.3599
www.eacg.com
State of NE Certificate of Authorization #CA008

E & A CONSULTING GROUP, INC.
Engineering Answers

**HANOVER FALLS
2024 STREET
RECONSTRUCTION**
SID 535
DOUGLAS COUNTY, NEBRASKA

COVER

Proj No:	P2005229.015	Date:	08/04/2024	Scale:	1" = 40'
Designed By:	TAMW	Drawn By:	TAMW	Sheet:	1 of 2

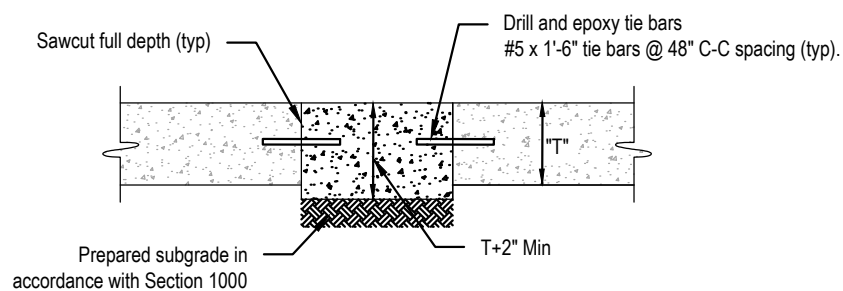


2024 STREET RECONSTRUCTION

AREA NO.	NO. POURS	SAW CUT L.F.	CURB L.F.	WIDTH	X	LENGTH	LARGE AREA EST S.Y.	SMALL AREA EST S.Y.	NOTES
2	2	60	10	25.0	x	10.0		27.8	
3	1	40	15	12.5	x	15.0	20.8		
	1	85		12.5	x	30.0	41.7		
4	2	35	69	10.0	x	25.0		27.8	
				12.5	x	12.5		17.4	
5	1	70	15	15.0	x	14.0		23.3	
				12.0	x	10.0		13.3	
6	1	30	140	15.0	x	70.0	116.7		
7	2	50	60	25.0	x	30.0	83.3		Adjust Manhole
8	1	55	30	12.5	x	30.0		41.7	
9	1	40		10.0	x	10.0		11.1	
10	2	70	45	12.5	x	45.0	62.5		Adjust Manhole
11	1	160	15	12.5	x	80.0	111.1		
				12.5	x	30.0	41.7		

2024 STREET RECONSTRUCTION - DIAMOND GRINDING

AREA NO.	TYPE	APPROX. DIMEN.		EST S.Y.	NOTES
1	Diamond Grinding	3	x 95	31.7	



SMALL AREA CONCRETE PAVEMENT REPAIR DETAIL
NOT TO SCALE



E & A CONSULTING GROUP, INC.
Engineering • Planning • Environmental & Field Services
10809 Mill Valley Road, Suite 100 • Omaha, NE 68154
Phone: 402.865.4700 • Fax: 402.865.3599
www.eaeg.com
State of NE Certificate of Authorization #CA0008

E & A CONSULTING GROUP, INC.
Engineering Answers

HANOVER FALLS 2024 STREET RECONSTRUCTION
SID 635
DOUGLAS COUNTY, NEBRASKA

PLAN

Revisions
Date Description
1 08/04/2024 TMM
Drawn By: TMM
Scale: 1" = 300'
Sheet: 2 of 2

Proj No: P2005-229-015
Date: 08/04/2024
Designed By: TMM
Drawn By: TMM
Scale: 1" = 300'
Sheet: 2 of 2

Chase J. Luther 9/6/2024 8:30 AM K:\Projects\2005\229\p15\Engineering\CAD Files\Paving\Hanover Falls 2024 Street Reconstruction-000.dwg